



Application

- DVB-T/-H/-T2 & ISDB-T deployment
- Coverage enhancement
- Mountainous and rural areas

Key Features

- 2 channels in one case
- Echo canceller -15 dB
- Automatic digital pre-correction
- Channel Filter included
- HTTP, SNMP server
- Remote control by GPRS

Benefits

- No shelter needed
- Fast and easy deployment

Contact us

- protel@protel.it
- www.protel.it

Solution for Digital TV coverage

Dual DVB-T/-H/-T2 & ISDB-T Gapfiller 1W - 5W



DVB-T **DVB-H** **DVB-T2** **ISDB-T**

All-in-one Outdoor DVB & ISDB Gapfiller Station

A whole integrated solution : an unique receiving antenna access, 2 complete gapfiller modules with 1W or 5W amplifiers, 2 filters, a combiner, an unique transmitting antenna access and a monitoring module with HTTP and SNMP server, in a single outdoor case.

A low installation cost: easy engineering rules thanks to the high sensitivity of the system allowing to re-broadcast a low level signal (up to -72dBm) and the high efficient echo-canceller system allowing an easy antennas installation.

A low ownership cost: any shelter is needed, only 4 m² floor with concrete slabs in case of mast-mounting, only a 4 m² wall in case of wall-mounting.

A connected solution: embedded WEB & SNMP server, friendly GUI, remote control through IP network or optional embedded GPRS modem. Network Management System is available.

A complete offer: turnkey sites kits, electrical cases, masts, cabin protection, etc... are available optional.



192 – Dual DVB-T/-H/-T2 & ISDB-T Gapfiller Station 1W-5W – ed7 – 10/2011

Quality Model FP1004D / ed 27 / 07 / 2011

DISTRIBUTORE PER L'ITALIA :
PROTEL S.a.s. – Via Magellano, 3 A/B int. 6 – 20090 Cesano Boscone (MI) Tel.: 02.4860.0265 - Fax: 02.4860.0871



Solution for Digital TV coverage

Dual DVB-T/H/T2 & ISDB-T Gapfiller Station 1W-5W

RF Features	2x1W	2x5W
Standards	DVB-T, DVB-H, DVB-T2, ISDB-T	
Input / Output Frequency	470-862 MHz	
Bandwidth	8, 7 or 6 MHz	
Offset	-3, -2, -1, +1, +2, +3 x 1/6 MHz	
Return loss	-17 dB (1,33 : 1)	
Input level	-72 to -32 dBm	
Output level / channel	1 Wrms	5 Wrms
Out of band emission	Compliant with : ETSI EN 302 296 V1.1.1	
Shoulders	≥ 37dB (≥ 39dB typ.)	
MER	≥ 30dB (≥ 32dB typ.)	
<i>Gapfiller without echoes</i>	≥ 25 dB	
<i>Gapfiller with echoes</i>		

Echo-canceller Features	Standard Mode	Enhanced Mode
Gain – Isolation ratio	-5 dBc	-15 dBc
Correction efficiency	30 dB	30 dB
Cancellation width	4 μs	2 μs
Selectivity	50 dB	80 dB
Group delay	< 7.1 μs	< 10.2 μs
Gain regulation	Automatic decrease of the gain to guarantee a good transmission signal if the reception level is too low or deterioration of the antennas isolation	



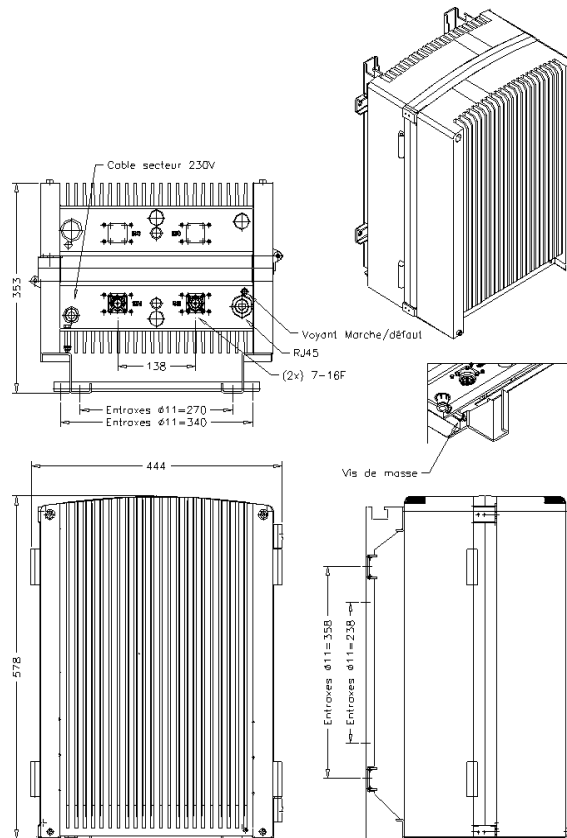
Solution for Digital TV coverage

Dual DVB-T/H/T2 & ISDB-T Gapfiller Station 1W-5W

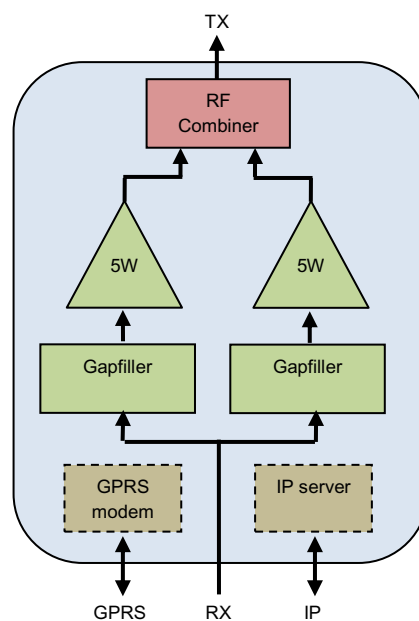
Mechanical Features	2x1W	2x5W
Control and monitoring	WEB, SNMP Remote control by GPRS (optional) SELECOM Network Management Station (optional)	
Maintenance	All the modules are full band and can be easily replaced	
Architecture	Outdoor cabinet	
Dimensions	H582×L426×P352 mm ³	
Weight	49 kg	
Fastening	On wall or on mast	
Protection against corrosion	Aluminum treated against the oxidation and painted	
Ingress Protection	IP65	
Cooling	Natural convection	
Power supply range	85-265 VAC	
Power consumption	66 W	110W
Coaxial standard connectors	N female	
RF Combining	Non adjacent channels : star-point combining filter Adjacent channels : manifold combining filter	
Temperature	-30°C to +45°C	







Ordering Code	Designation
GX-DVB-DOS-x	Output Power : <ul style="list-style-type: none"> • 1W => x = 1 • 5W => x = 5 • 10W => x = 10
GX-DVB-OPT-MFN	Hardware option for MFN

Mounting Plan



Synoptic



Options	
<p>Cabin protection</p> 	<ul style="list-style-type: none"> ✓ Protection against Sunlight and Rain ✓ Compatible with all SELECOM Repeaters ✓ Easy installation ✓ Support for laptop or measuring device
<p>Electrical Case</p> 	<ul style="list-style-type: none"> ✓ Outdoor case ✓ Cost effective solution ✓ Isolation Transformer ✓ GFCI ✓ Re-starter ✓ Service Outlet ✓ CE compliant ✓ Custom design on request
<p>GPRS Modem</p> 	<ul style="list-style-type: none"> ✓ For the remote control via GPRS network
<p>NMS (Network Management System)</p> 	<ul style="list-style-type: none"> ✓ NMS software manages a complete network of different SELECOM equipment ✓ Screens with complete status and reports ✓ Location on a map of each equipment ✓ SMS, EMAIL alerts ✓ Equipment control in case of needing
<p>Solar panels</p> 	<ul style="list-style-type: none"> ✓ Free Energy ✓ Battery for autonomy in case of lack of sunlight ✓ Automatic relay to standard power supply ✓ Ecological solution
<p>Turnkey sites kits</p> 	<ul style="list-style-type: none"> ✓ Donor & Emission antennas ✓ Feeders ✓ Grounding kits ✓ Wood and metallic masts ✓ Lightning protection ✓ Electro-technical kits